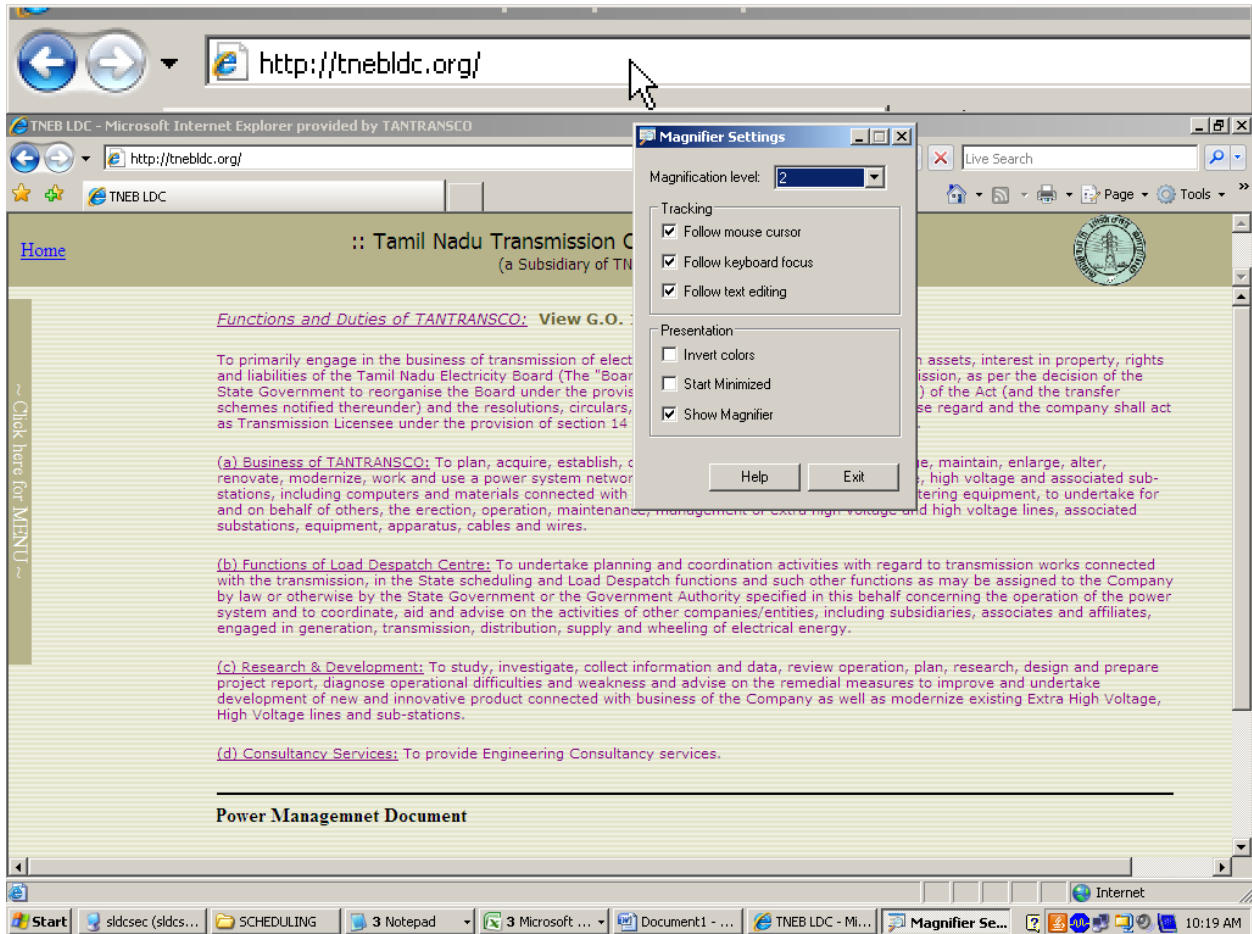
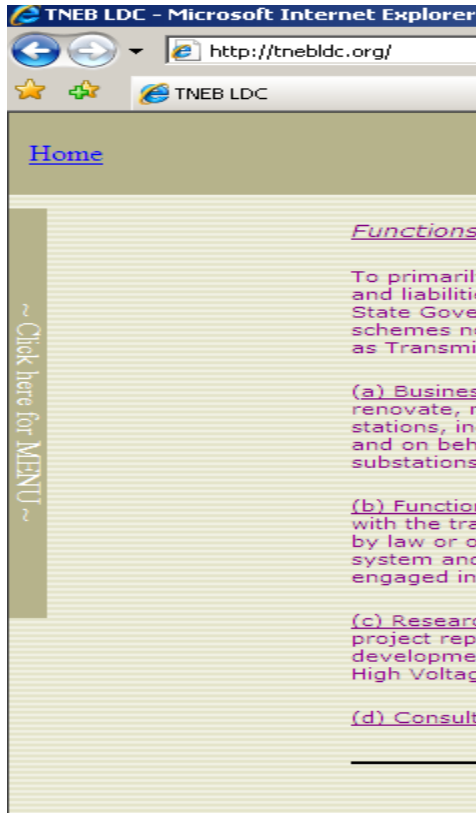


a) In the web browser enter the URL <http://tneblcd.org> .



b) Move the cursor over the menu "Click here for MENU".



c) When the cursor was moved over "Click here for MENU" a slide out menu appears and in that click "Day Ahead Generation Availability (ATC)".



D) A new web page opens . Enter your allocated User ID & Password which was already send to you in the earlier e-mail. If you have forgotten or lost the User ID or Password please e-mail to " [aeldmtc@tnebnet.org](mailto:aeldmtc@tnebnet.org) ". The User ID , Password will be emailed to you.

User ID [xxxxxx@xxx.xx](#) (please enter the User ID assigned to you).

Password ..... (please enter the Password assigned to you).

Press "Login Now!"

TNEB LDC - Microsoft Internet Explorer provided by TANTRANSCO

http://tnebldc.org/

Home

:: Tamil Nadu Transmission Corporation Limited ::  
(a Subsidiary of TNEB Ltd.)

For security reasons change password

User ID  
  
(Example :mailuser@tnebnet.org)

Password

[Change Password](#)

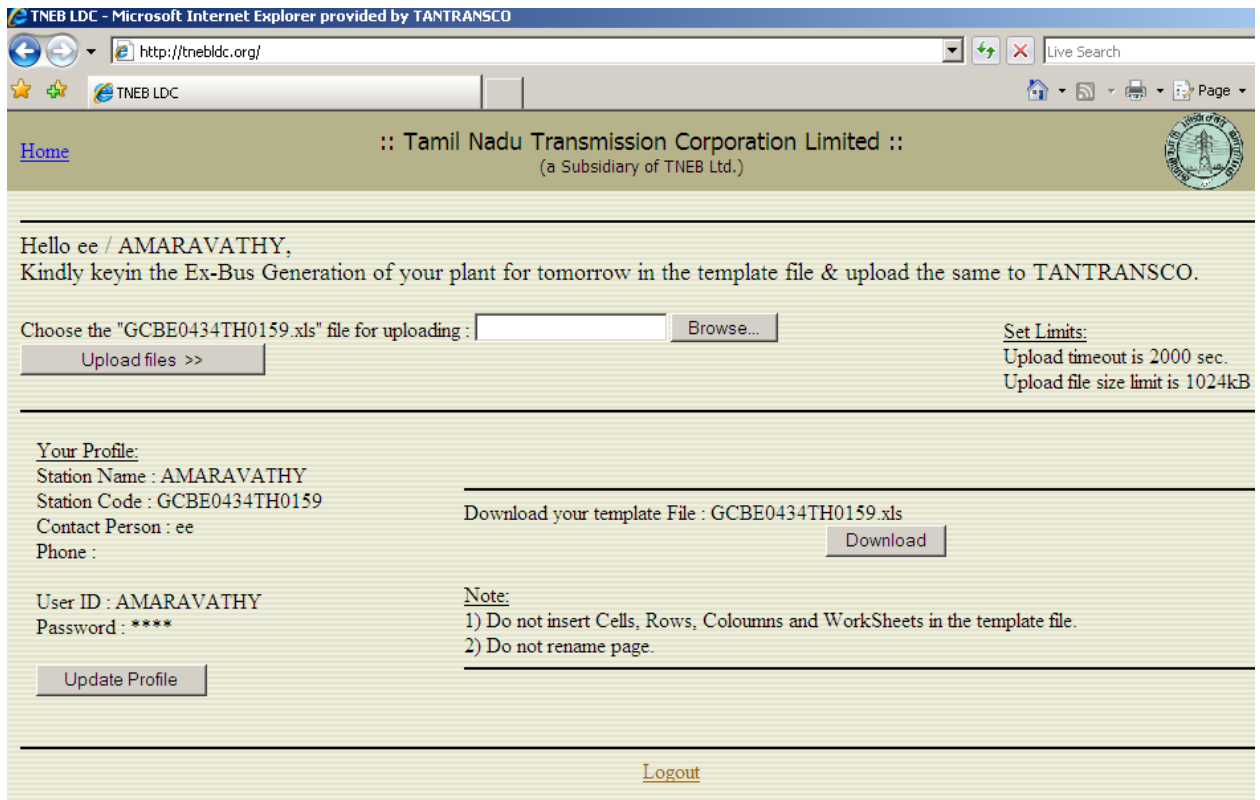
To get New User name send a written request to The Director Operation / TANTRANSCO (044-28521088)

For support mail to : [aeldmtc@tnebnet.org](mailto:aeldmtc@tnebnet.org) OR contact (044-28520131 Ext: 2619)

Note : For complete functioning of this site use JAVA enabled IE6 or higher version  
[Download JDK for installer file \(16 MB\)](#)  
[Flash Player9 Installer \(4.5 MB\)](#)  
[Acrobat Reader8 Download \(36 MB\)](#)

e) The user page will open as shown below :

Press the " **Download** " button  .



TNEB LDC - Microsoft Internet Explorer provided by TANTRANSCO

http://tnebldc.org/ Live Search

Home :: Tamil Nadu Transmission Corporation Limited ::  
(a Subsidiary of TNEB Ltd.)

Hello ee / AMARAVATHY,  
Kindly keyin the Ex-Bus Generation of your plant for tomorrow in the template file & upload the same to TANTRANSCO.

Choose the "GCBE0434TH0159.xls" file for uploading :  Browse...  
Upload files >>

Set Limits:  
Upload timeout is 2000 sec.  
Upload file size limit is 1024kB

Your Profile:  
Station Name : AMARAVATHY  
Station Code : GCBE0434TH0159  
Contact Person : ee  
Phone :

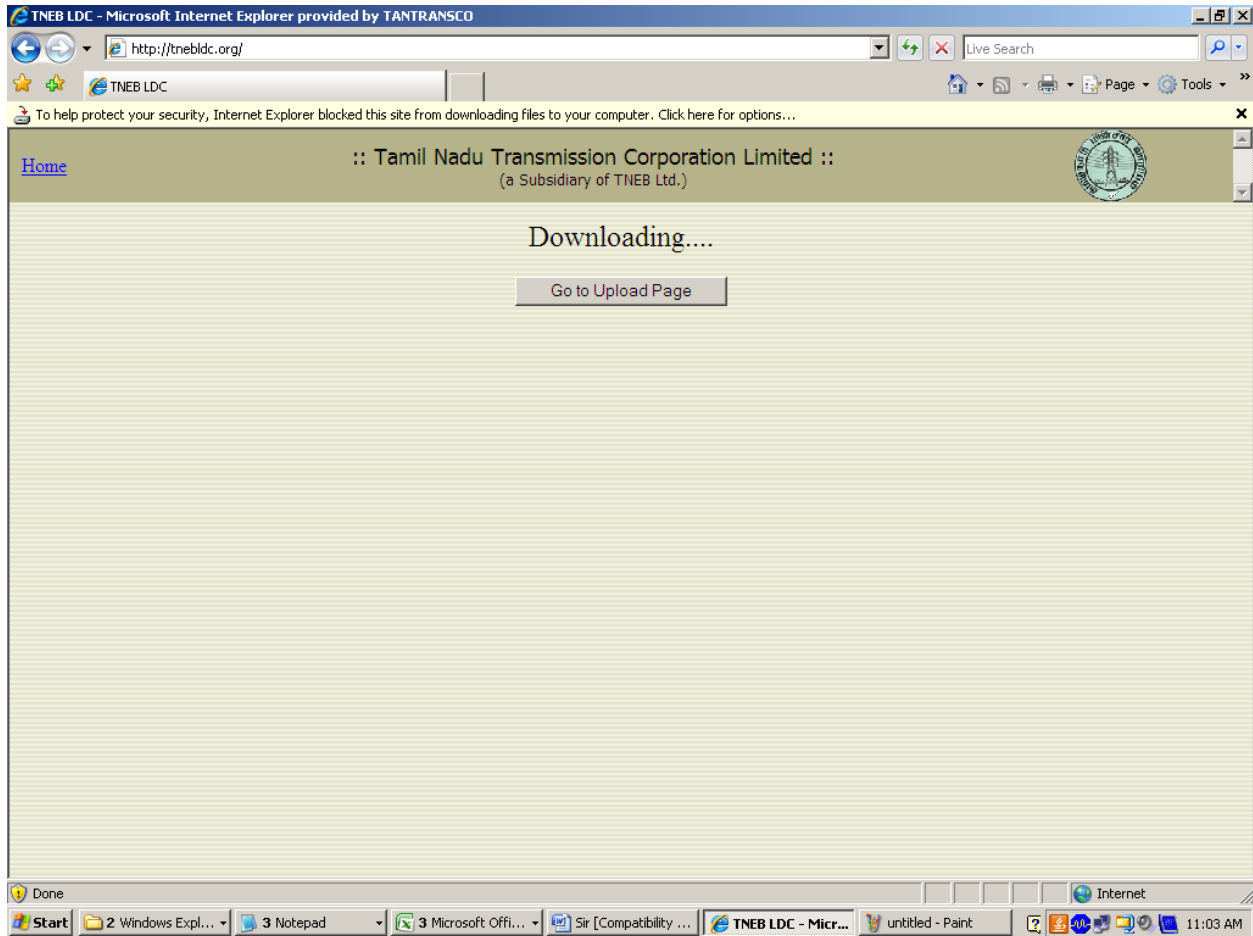
User ID : AMARAVATHY  
Password : \*\*\*\*  
Update Profile

Download your template File : GCBE0434TH0159.xls  
Download

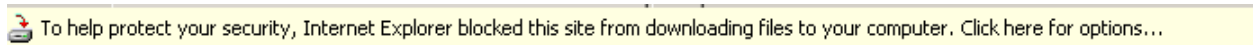
Note:  
1) Do not insert Cells, Rows, Coloumns and WorkSheets in the template file.  
2) Do not rename page.

[Logout](#)

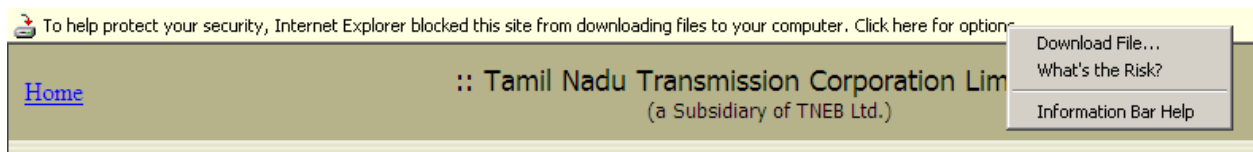
f) A new page will open



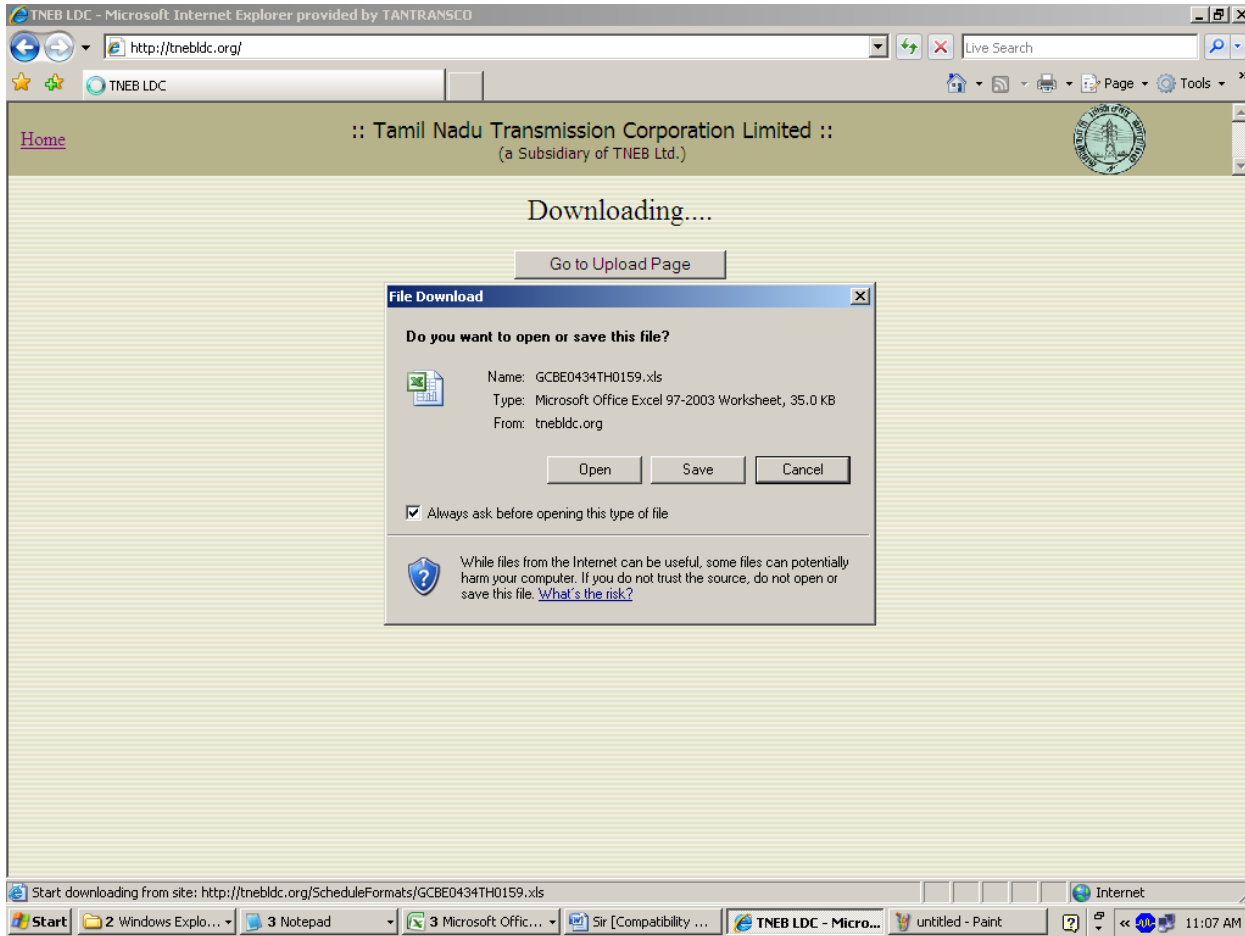
g) Right click on the



h) The pop up with Download File.. will appear and press it.



i) A Pop up will appear



j) Press either Open  or save  button as per your requirement. The excel sheet will open

Availability declaration by Generators / FORM - A					
					Revision No.:
Name of the Generating Station : Amaravathi Micro PH					
Station Code : GCBE0434TH0159					
Installed Capacity :					MW
Declaration of availability for (Date) : DD: <input type="text" value="9"/> MM: <input type="text" value="Apr"/> YY: <input type="text" value="2011"/> DATE: <b>9-Apr-2011</b>					
Date and Time of Reporting : (mm/dd/yy hh:mm)					

A. Following is the declaration of Generation availability in MW at the Ex-Bus of the generator required for Scheduling.

TIME BLOCK	TIME PERIOD	Availability Ex-Bus (MW)	TIME BLOCK	TIME PERIOD	Availability Ex-Bus (MW)
1	0000-0015	89.00	49	1200-1215	100.00
2	0015-0030	89.00	50	1215-1230	100.00
3	0030-0045	89.00	51	1230-1245	100.00
4	0045-0100	89.00	52	1245-1300	100.00
5	0100-0115	89.00	53	1300-1315	100.00
6	0115-0130	89.00	54	1315-1330	100.00
7	0130-0145	89.00	55	1330-1345	100.00
8	0145-0200	89.00	56	1345-1400	100.00
9	0200-0215	89.00	57	1400-1415	100.00
10	0215-0230	89.00	58	1415-1430	100.00
11	0230-0245	89.00	59	1430-1445	100.00
12	0245-0300	89.00	60	1445-1500	100.00
13	0300-0315	89.00	61	1500-1515	100.00
14	0315-0330	89.00	62	1515-1530	100.00
15	0330-0345	89.00	63	1530-1545	100.00
16	0345-0400	89.00	64	1545-1600	100.00
17	0400-0415	89.00	65	1600-1615	100.00
18	0415-0430	89.00	66	1615-1630	100.00
19	0430-0445	89.00	67	1630-1645	100.00
20	0445-0500	89.00	68	1645-1700	100.00
21	0500-0515	89.00	69	1700-1715	100.00
22	0515-0530	89.00	70	1715-1730	100.00
23	0530-0545	89.00	71	1730-1745	100.00

Furnish the following values :-

Installed Capacity : " "

Declaration of availability for (Date) : Enter the date i.e next day from the combo box .

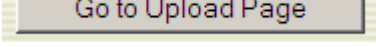
Date and Time of Reporting : " "

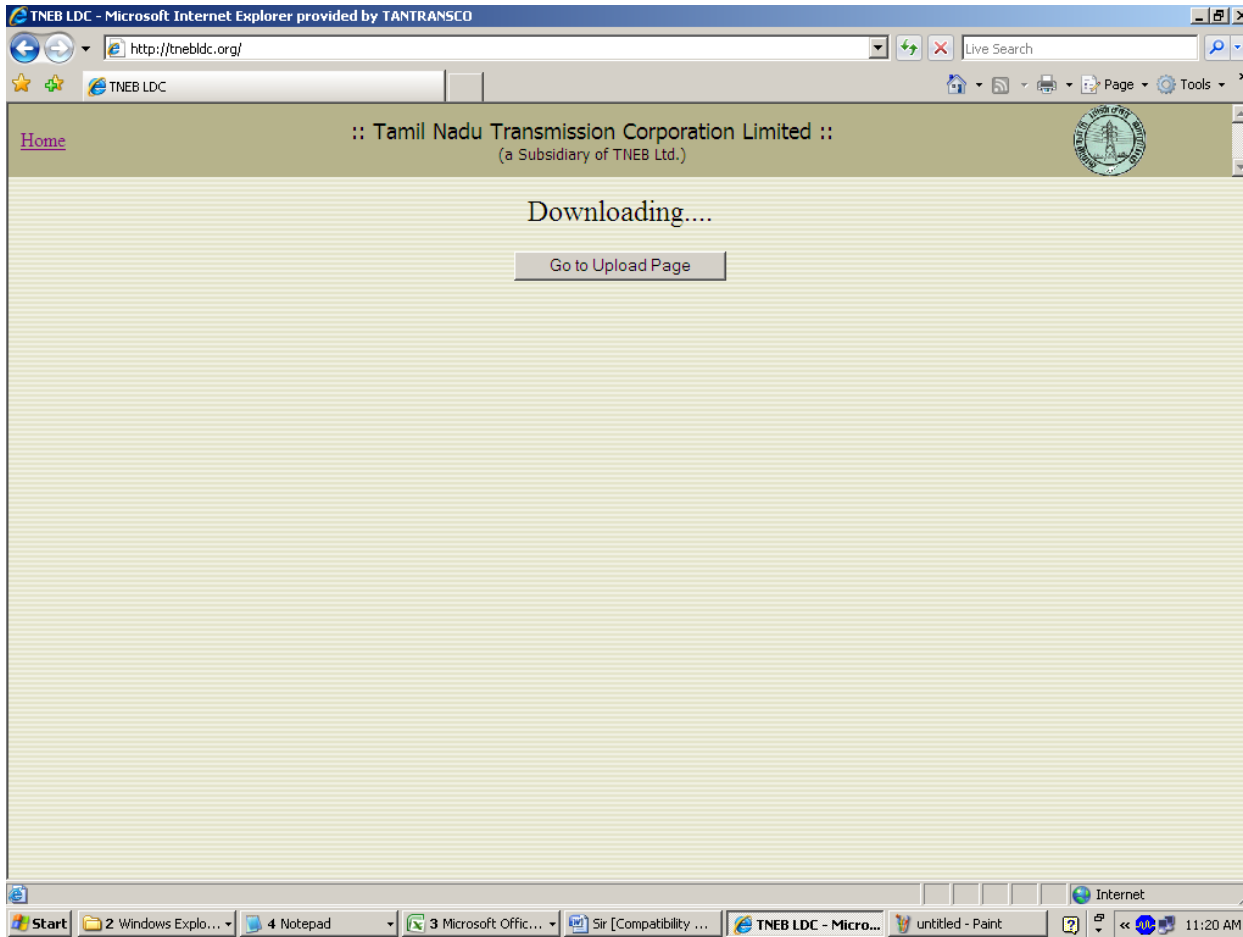
Enter the Availability Ex-Bus (MW) for TIME BLOCK "1 to 96".

- B. Technical Minimum of the Plant : " " MW/Unit
- C. Ramping up rate for the station: " " MW/Min/Unit
- D. Ramping down rate for the station: " " MW/Min/Unit

E. Constraints if any:.....

k) Save the file . PLEASE DO NOT CHANGE THE FILE NAME .

L) In the web browser press  . The upload page will appear.



M) The upload page will appear

[Home](#) **:: Tamil Nadu Transmission Corporation Limited ::**  
(a Subsidiary of TNEB Ltd.)

Hello EXE-ENGINEER / MARAVAKANDI,  
Kindly keyin the Ex-Bus Generation of your plant for tomorrow in the template file & upload the same to TANTRANSCO.

Choose the "GCBE0482TH0152.xls" file for uploading :

Set Limits:  
Upload timeout is 2000 sec.  
Upload file size limit is 1024kB

Your Profile:  
Station Name : MARAVAKANDI  
Station Code : GCBE0482TH0152  
Contact Person : EXE-ENGINEER  
Phone : 4232526310

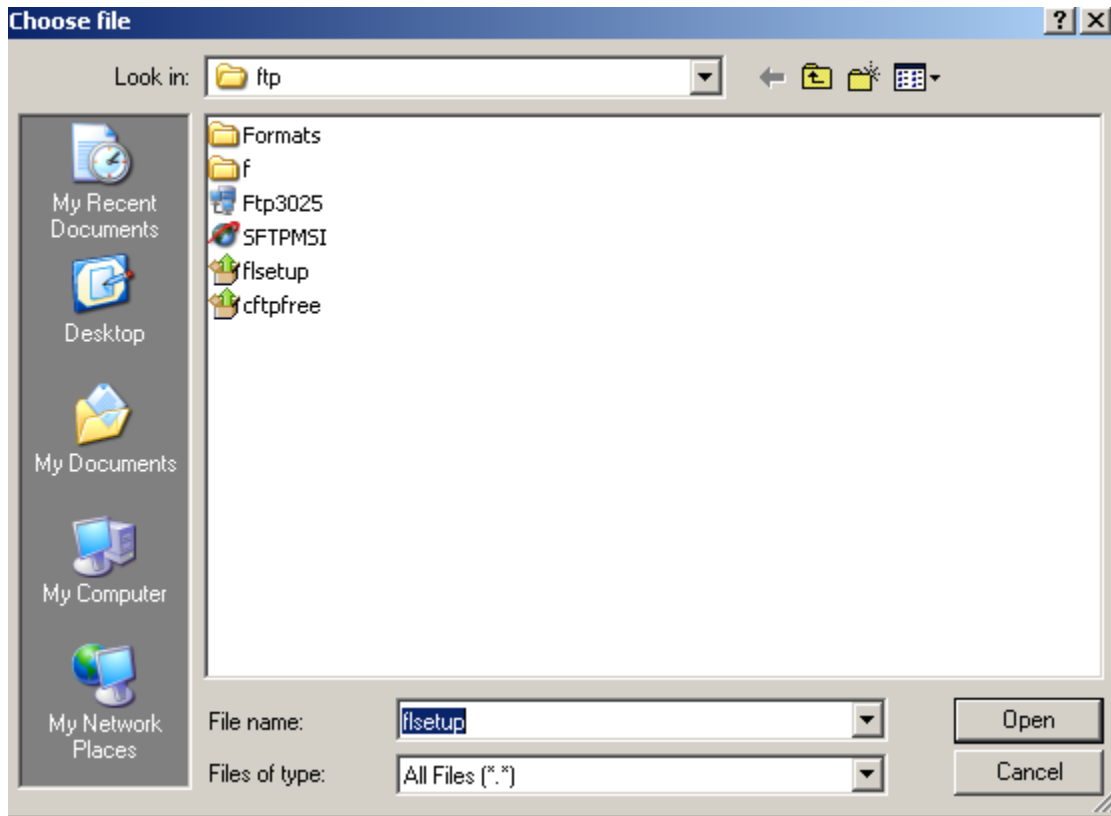
Download your template File : GCBE0482TH0152.xls

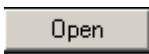
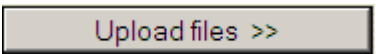
User ID : MARAVAKANDI  
Password : \*\*\*\*

Note:  
1) Do not insert Cells, Rows, Coloumns and WorkSheets in the template file.  
2) Do not rename page.

[Logout](#)

n) Press browse  a pop up will appear



o) point to the location of the excel file you just saved and press save  .and then press  . Now you have successfully uploaded the file .

p) Press  to end the session.